



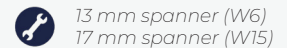
Cleaning guidelines

This description is related to the [Giesen maintenance videos](#). In addition to the video, you can also use this document. Do you still have questions? Please feel free to contact Giesen Support. Perform these cleaning tasks once a year or every 400 hours for the best results.

1.

Remove the hopper

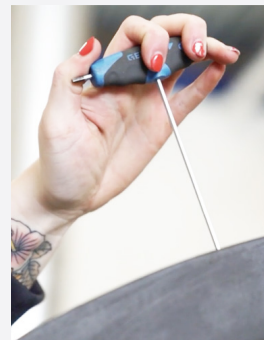
For this you need a second person. One person supports the hopper while the other unscrews the bolts. When all four bolts are removed you can remove the hopper.



2.

Remove the roof

Start by loosening the silver swivel that connects the lamp to the roof. Once this is loose, you can detach the lamp. Now you can remove the four socket head bolts holding the roof on its place. Before you entirely remove the roof, lift it halfway and also loosen the lamp connector under it. When disconnected, you can remove the roof completely.



3.

Remove the insulated tube

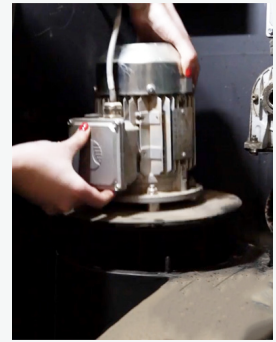
Now, remove the insulated tube that connects the internal cyclone funnel to the fan. Use the Allen keys to remove the two bolts on top of the tube. After that, the tube can be removed. This may require some force as the tube is clamped into the fan housing. Clean the inside of the tube with a brush.



4.

Remove the roast fan

To remove the roast fan, which is the left fan, you will first need to remove the four bolts that hold the fan in place. When the four bolts are removed, pull the motor upwards carefully. Be extra careful not to damage the fan blades.



Allen key set

5.

Clean the roast fan

Cleaning the roast fan is important as dirt accumulates here over time. If not removed on time, it can have consequences for the airflow of your roaster. This can cause hazardous situations such as fire.



Allen key set

6.

Clean the internal cyclone tubing

Clean the tube which connect the cyclone funnel to the fan. Insert the tube at the front of the roaster. Use a flexible brush so you can push it easily through the bends of the tubes. This will loosen all the caked-on dirt. Don't forget to remove first the funnel and doors from the internal cyclone before start the cleaning process.



Allen key set

7.

Clean the cyclone connector

Make sure that the parts are clean before reassembling.

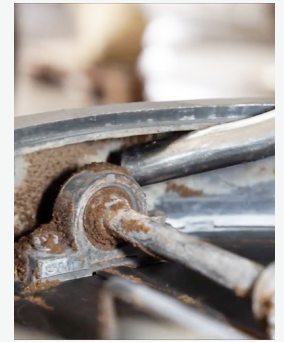


Allen key set

8.

Clean underneath the cooling sieve

Remove the cooling sieve and put it on its side. Clean all the dirt. After that, remove the two side doors so you can clean the internal cyclone. When the doors are removed, pull out the funnel and clean underneath.



Allen key set

9.

Grease the back and front bearing

When the roof and all other parts have been removed, you can easily reach the rear bearing for greasing. Use a grease pump with Total Caloris MS23 grease. Connect the grease pump to the greasing nipple and pump three times. Also grease the front bearing of the roaster. First remove the bearing cover. Then remove the old grease and apply new the one.



Allen key set

10.

Put the roast fan back in place

Mount the roast fan back in the reversed way as it was removed. Carefully lower it into the fan house and tighten the four bolts.

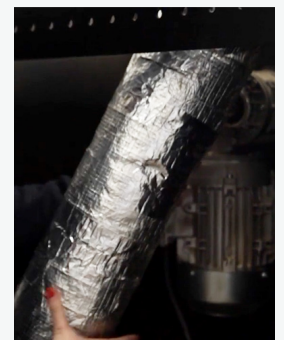


Allen key set

11.

Clean and reinsert the insulated tube

After cleaning the insulated tube, place it back. First connect the bottom side of the tube before connecting the top side. Insert the tube firmly into the fan housing. With the tube back in place, tighten the bolts. Make sure that the tube is aligned correctly, otherwise the bolts cannot be inserted.

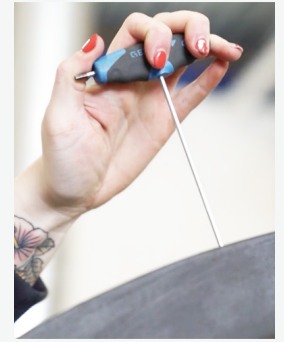


Allen key set

12.

Refit the roof

You can put the roof back in opposite order. Before you tighten the screws, make sure the connector of the lamp is connected and the roof is properly aligned. After this you can tighten the screws of the roof.



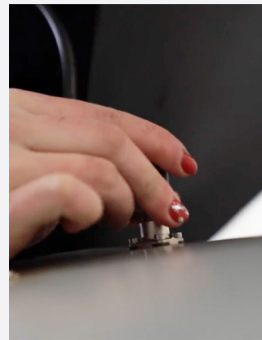
Allen key set

13.

Reconnect the lamp roof connector

Tighten the lamp connector on top of the roof.

Note: There is only one way to place the cable. If the connector is incorrectly attached and tightened it may cause damage.

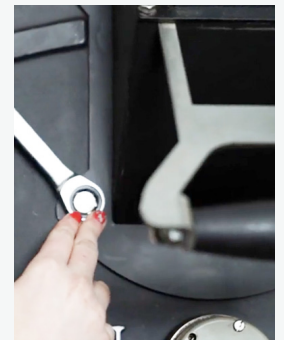


Allen key set

14.

Clean and refit the hopper

Clean the hopper before mounting. Use suitable tools that will not damage the material. Do this just as described in the step above.

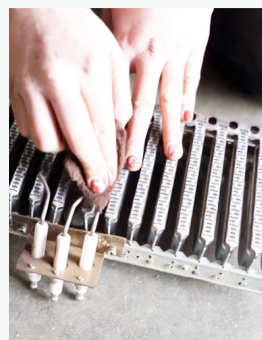


Allen key set

15.

Take out and clean the burner

Double check that the gas valve is closed. Also make sure the gas gasket is in good condition. First unscrew the gas-connection bolts. Then, loosen the bolts that hold the burner in place. You can now remove the burner. Clean the burner using compressed air. Then, put the burner back in place. Make sure the gas connection is properly connected.



Allen key set